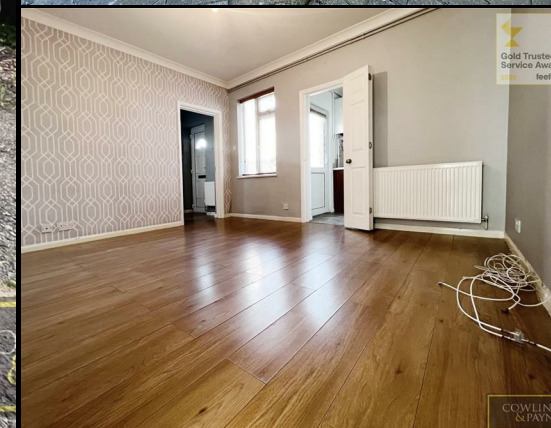
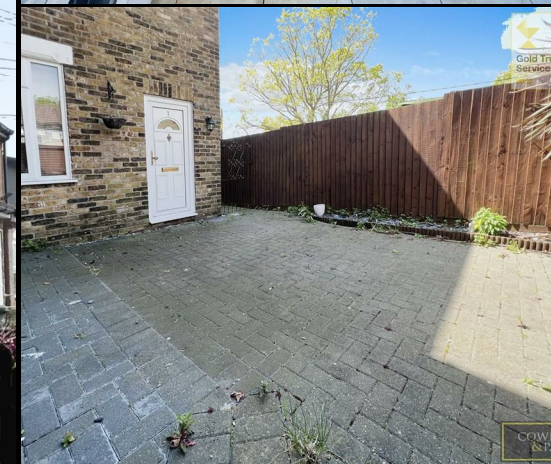


RESIDENTIAL SALES
LETTINGS & PROPERTY
MANAGEMENT

COWLING & PAYNE



Compton Terrace, Wickford
Asking Price £215,000

Cowling & Payne are delighted to bring to the market, this ONE bedroom, ground floor maisonette. If you have been looking for that ideal starter home with its own private outside space, then this is one not to be missed!

Entering into the property you will firstly be greeted into the entrance hall. Following on from there you will, a 3 piece bathroom, a spacious living room, double bedroom & lastly a good size kitchen with space for a dining table. The rear garden is low maintenance consisting of a paved patio area which can be accessed from the entrance hall & kitchen. Additionally the property benefits from off street parking to the side of the property.

Additional Information

In accordance with National Trading Standards material information the vendor has informed us of the following:

Tenure - Leasehold

Lease length - 119 Years Remaining

Ground Rent £200 per annum

Ground Rent Review Period - next due 2046

Service Charge - £500 per annum

Council Tax Band: A - Basildon Council



ENTRANCE HALL

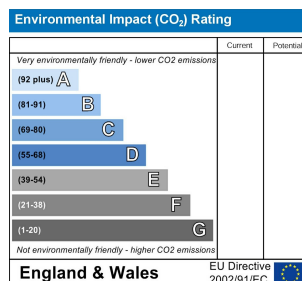
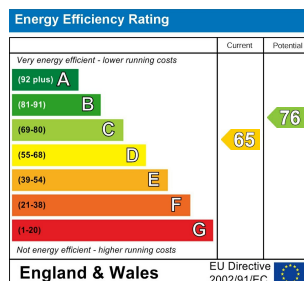
BATHROOM

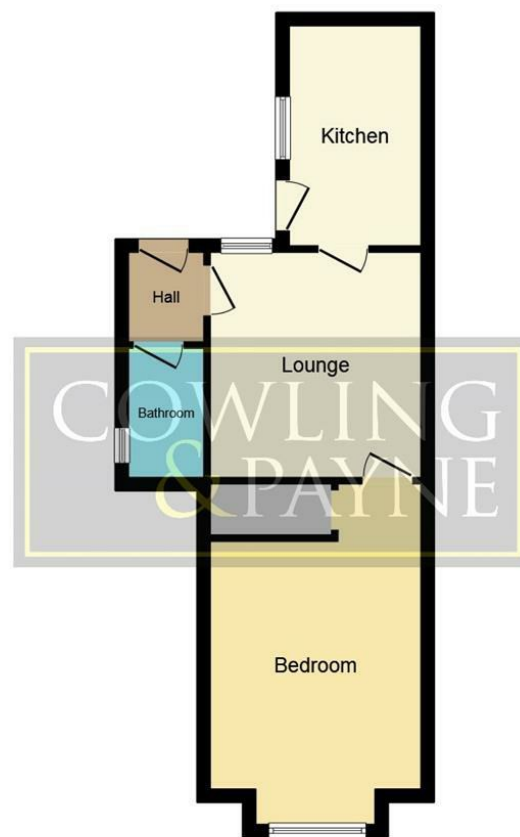
LOUNGE 13' x 10'

KITCHEN 13' x 8'

BEDROOM 13' x 12'

REAR GARDEN





Floor Plan

This plan is for illustration purposes only and may not be representative of the property. Plan not to scale.

You may download, store and use the material for your own personal use and research. You may not republish, retransmit, redistribute or otherwise make the material available to any party or make the same available on any website, online service or bulletin board of your own or of any other party or make the same available in hard copy or in any other media without the website owner's express prior written consent. The website owner's copyright must remain on all reproductions of material taken from this website.

